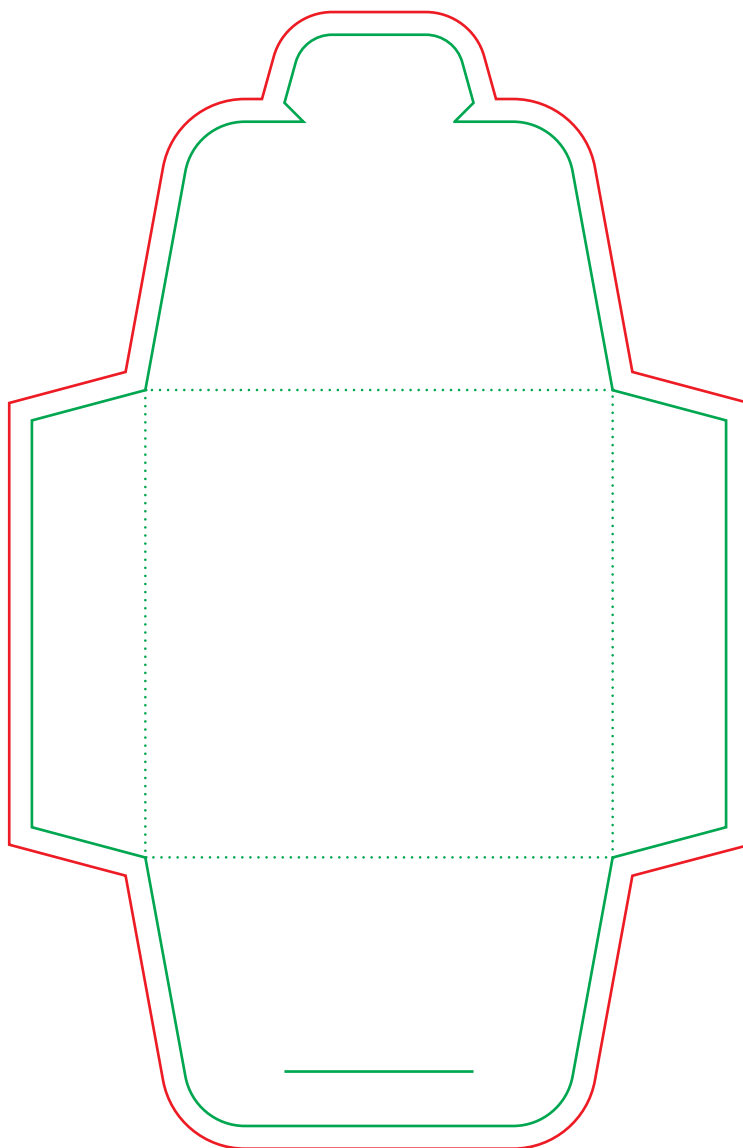


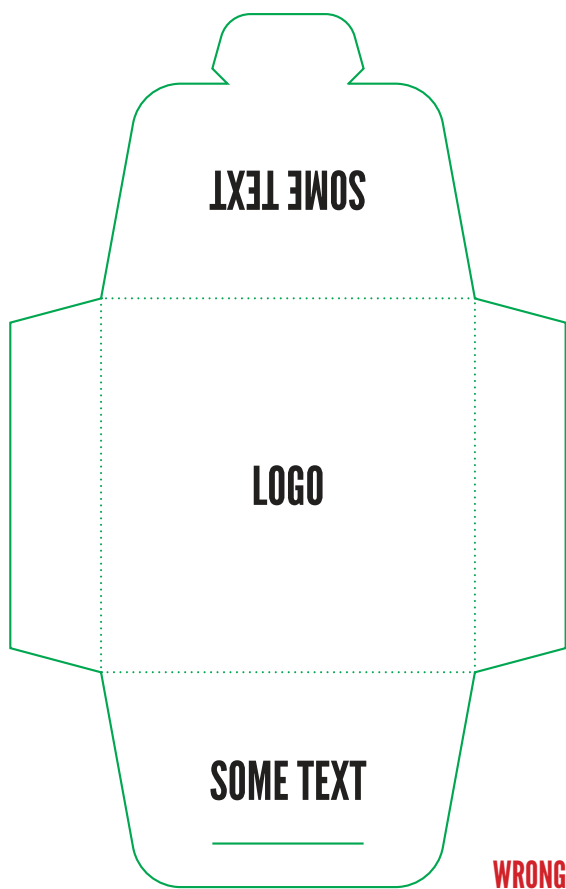
Die Cut Condom Pouch

Format 92 x 144,5 mm

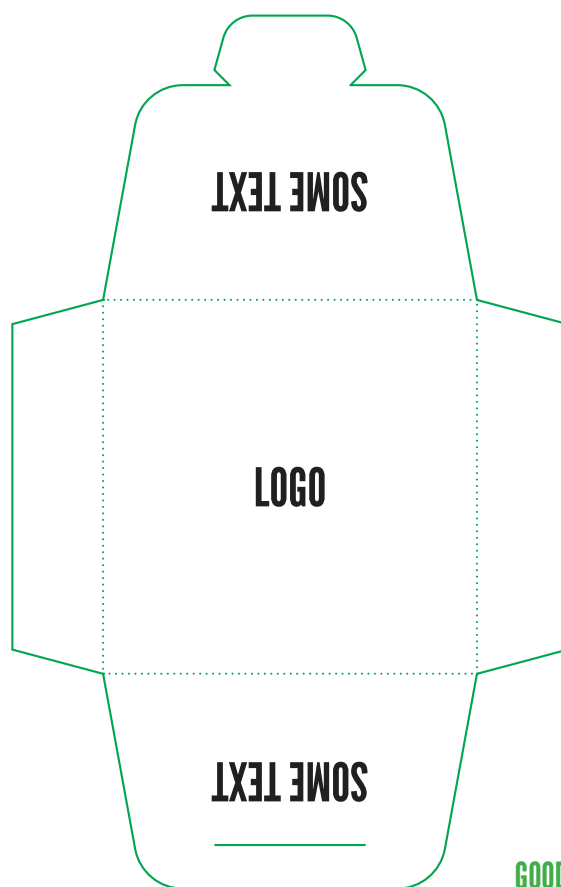


Important Guidelines – Please read before making artwork:

- The red and green lines shows where the cuts are going to be made. SO BE CAREFUL with any info/text close to them. Make sure your design fits the red line and your text is within the green line with a margin of 3mm.
- **Color mode:** Use CMYK mode for your design.
- **Text:** Be sure to convert all Text to Outlines or enclose Font.
- **Resolutions:** All designs and images need to be 300 dpi at 100%. Lower resolutions can result in poor results and higher will only increase the document size.
- **Save your artwork in PDF format** and in the Adobe PDF presets select 'High Quality Print' and in the options check the box that says 'Preserve Illustrator Editing Capabilities'.
- **Accepted File Types:** .PDF files are preferred but .EPS / .AI / .TIFF / .PSD we also accept. We don't accept .GIF or Low Rez .JPEG Files.



WRONG



GOOD

Important Guidelines – Please read before making artwork:

- The red and green lines shows where the cuts are going to be made. SO BE CAREFUL with any info/text close to them. Make sure your design fits the red line and your text is within the green line with a margin of 3mm.
- **Color mode:** Use CMYK mode for your design.
- **Text:** Be sure to convert all Text to Outlines or enclose Font.
- **Resolutions:** All designs and images need to be 300 dpi at 100%. Lower resolutions can result in poor results and higher will only increase the document size.
- **Save your artwork in PDF format** and in the Adobe PDF presets select 'High Quality Print' and in the options check the box that says 'Preserve Illustrator Editing Capabilities'.
- **Accepted File Types:** .PDF files are preferred but .EPS / .AI / .TIFF / .PSD we also accept. We don't accept .GIF or Low Rez .JPEG Files.