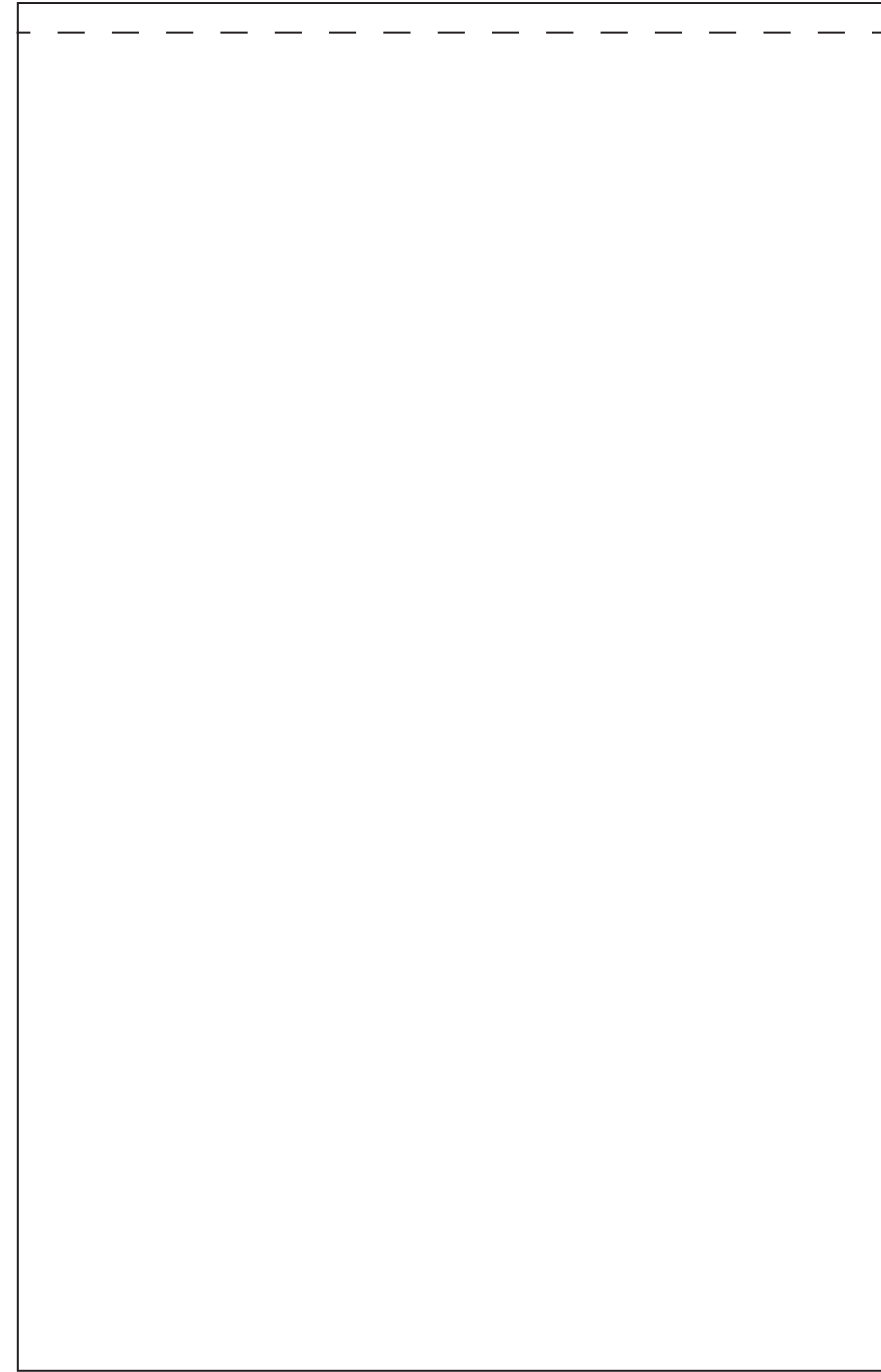


FRONT
30 x 47 cm



BACK
30 x 47 cm

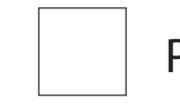
BottleBag Pack (Nederlands)

Bag colour

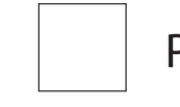


PMS: XXX

Print colour(s)



PMS: XXX



PMS: XXX

Side label colours:



PMS 376 C



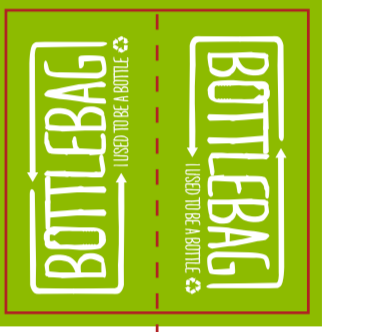
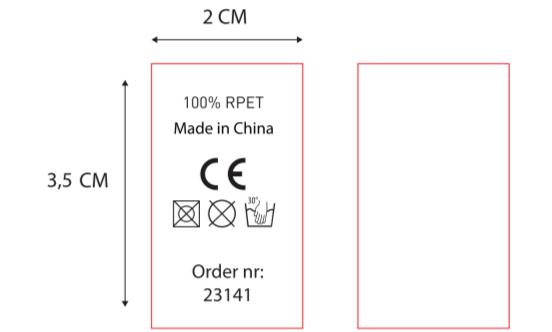
White

Colour strings



PMS: XXX

Care label
(inside)
2x3,5 cm



Material Hangtag BottleBag

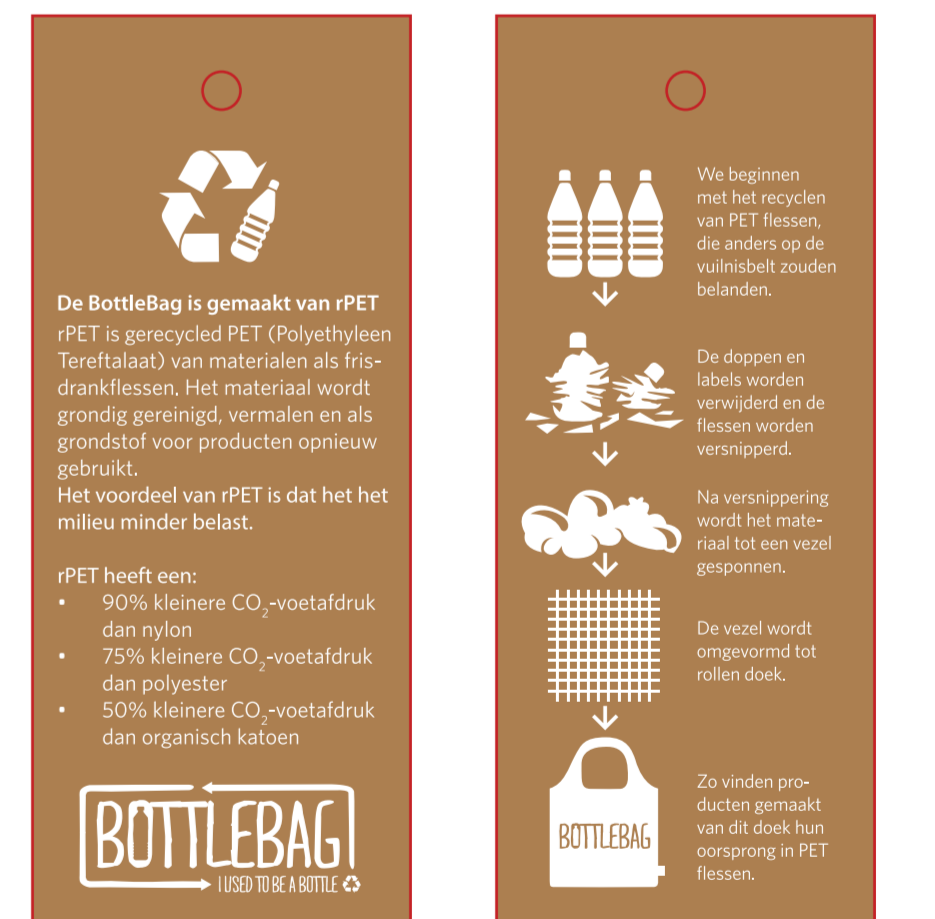


Kraft



Non-kraft

Hangtag BottleBag
Size 5x12 cm



A: Tolerance of placing graphics on the bottlebag is +/- 10 mm.

B: We are not able to match Pantone color on CMYK artwork.

C: Minimum readable size of fonts is 8 pt.

D: Physical sample for approval is possible with acceptance of surcharge of € 50,00

E: We are not able to match Pantone color on woven side label.

F: Size of the bag will be 45 cm x 68 cm when assembled.