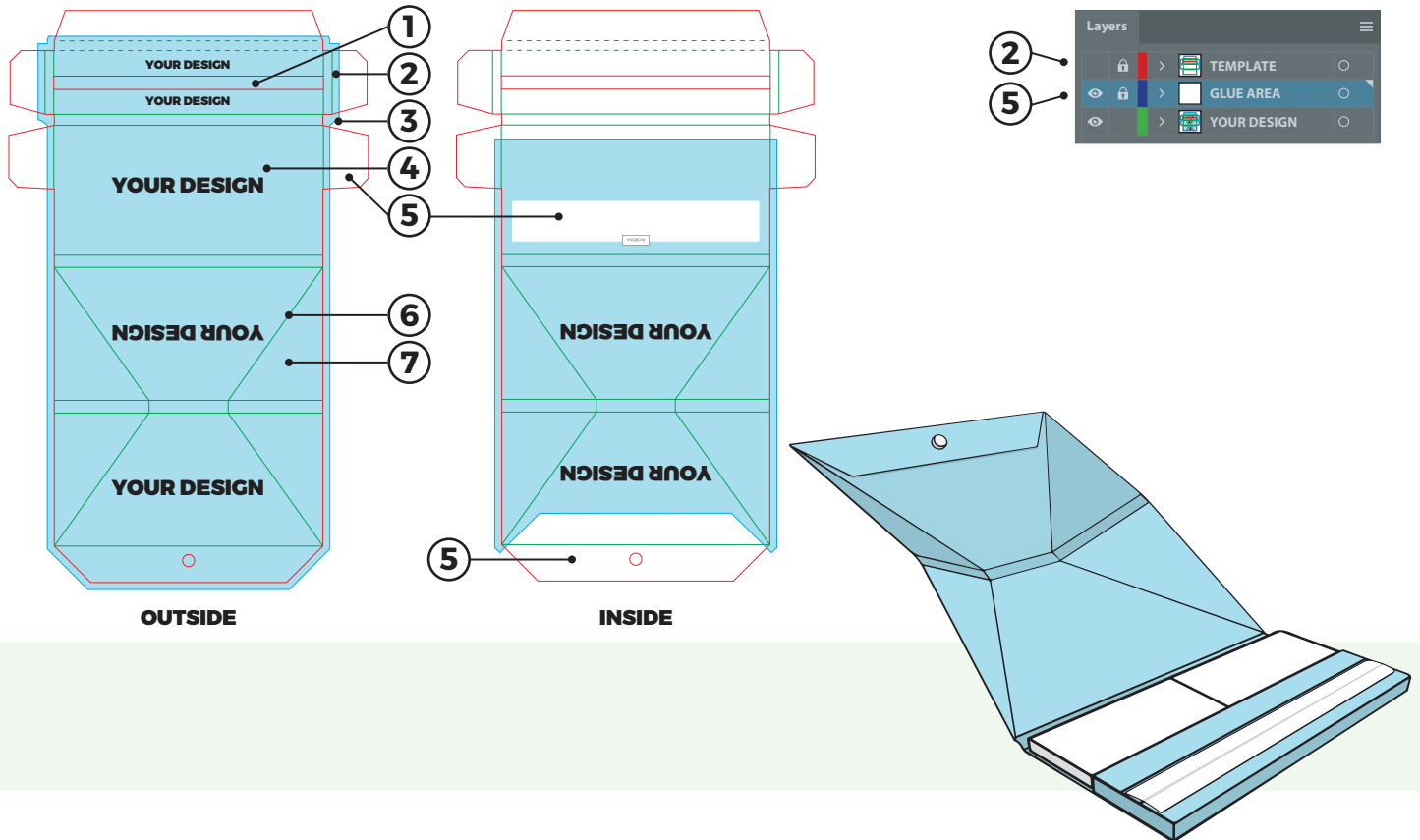






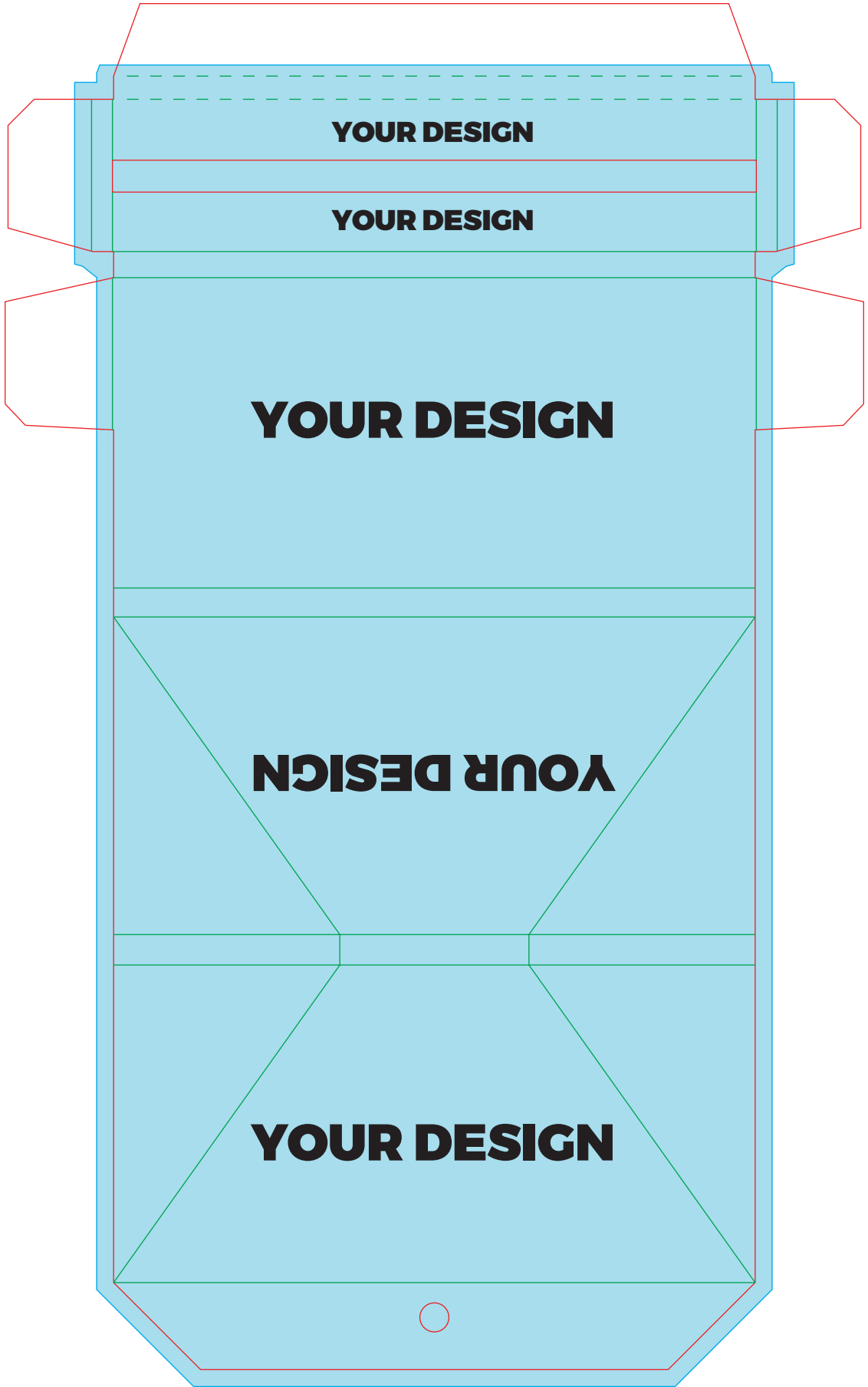
# MAXI PACK KSS+TIPS WITH A ROLLING TRAY

## CUSTOM ROLLING PAPERS

### THE TEMPLATE DESIGN INSTRUCTIONS FOR PRODUCT MAXI PACK KSS+TIPS WITH A ROLLING TRAY



- |   |                          |   |
|---|--------------------------|---|
|  | <b>BLUE AREA:</b>        | Final product printable design area.  |
|  | <b>BLUE LINE:</b>        | Bleed line – the background design must be filled to the blue line.   |
|  | <b>RED LINE:</b>         | Estimated knife cutting line. All important artwork must be placed at least 3 mm inwards.   |
|  | <b>GREEN LINE:</b>       | Folding line.   |
|   | <b>BEYOND BLUE LINE:</b> | Non-printing area.  |
|   | <b>IMAGES:</b>           | Images must be attached or embedded (in case of .ai and .eps files) into final design, not just linked. A JPG/JPEG and a PNG format are possible. We recommend a PNG format with 300 DPI. |
| ROLLING PAPER LEAVES SLOT ①   |                          | The slot must be filled with the background design. It will not be visible in the final product.  |
| TEMPLATE LAYOUT LINES ②   |                          | The layout lines must not be visible. The template layer must be switched off or removed.   |
| BLEED AREA ③  |                          | Background design must be filled at least 3 mm over the cutting line or at least to the blue line.  |
| OUTLINED TEXT ④   |                          | All text must be in curves.   |
| GLUE/BIDING AREA ⑤  |                          | The glue/biding area must be without design or background.  |
| RESOLUTION ⑥  |                          | Resolution of all design elements must be 300 DPI.  |
| COLOUR MODE ⑦   |                          | Only CMYK colours are possible to print. Contact the sales representative for more options.   |
| <b>TRADEMARKS:</b>  |                          | You take full responsibility for the use of trademarks in your submitted design.  |
| <b>FILE FORMATS:</b>  |                          | PDF or EPS.   |
| <b>PRINT DIFFERENCES:</b>   |                          | Some colour difference is possible.   |
| <b>FINISHED PRODUCT:</b>  |                          | We print only in CMYK colours. A colour difference between a screen and a final product is possible.  |



**YOUR DESIGN**

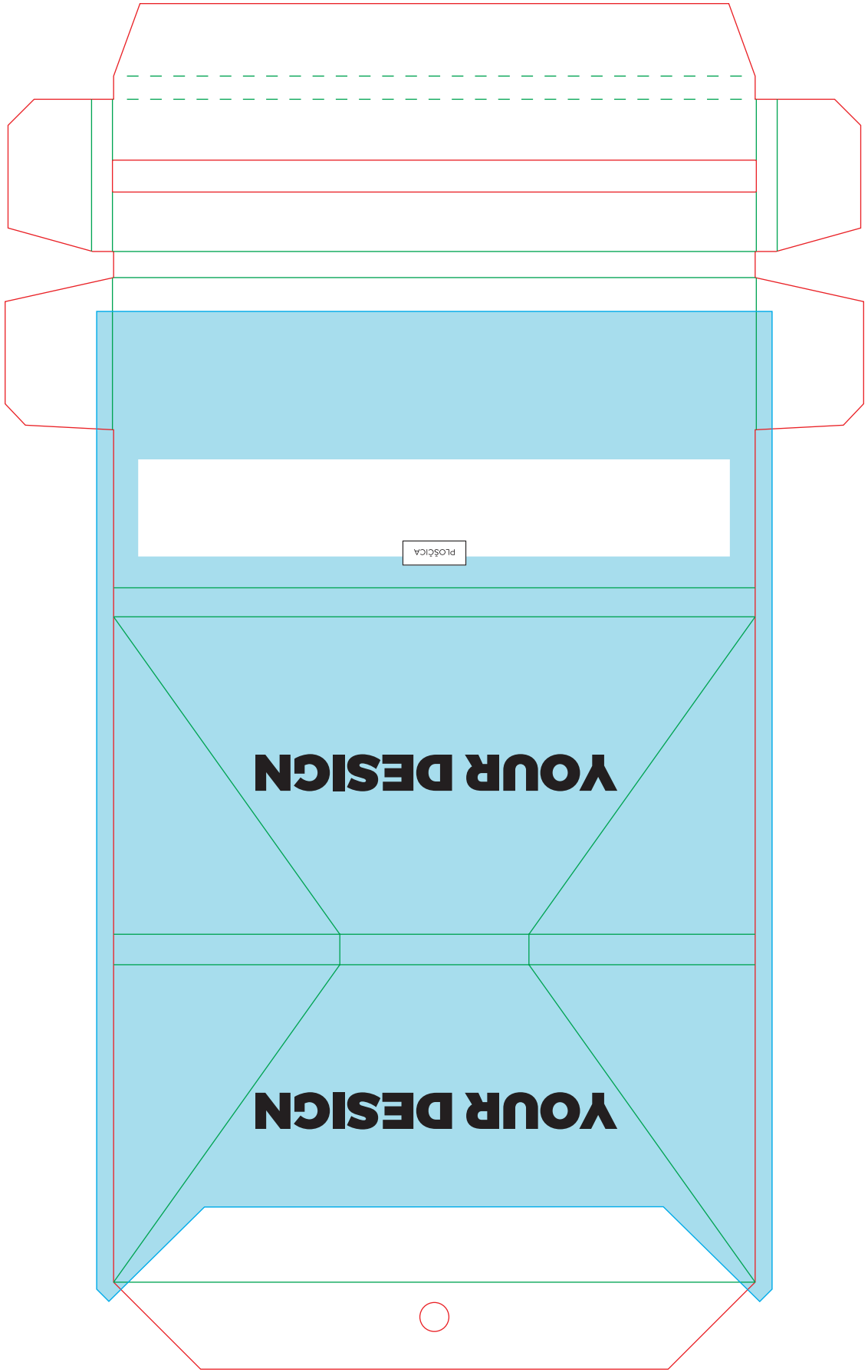
**YOUR DESIGN**

**YOUR DESIGN**

**YOUR DESIGN**

**YOUR DESIGN**

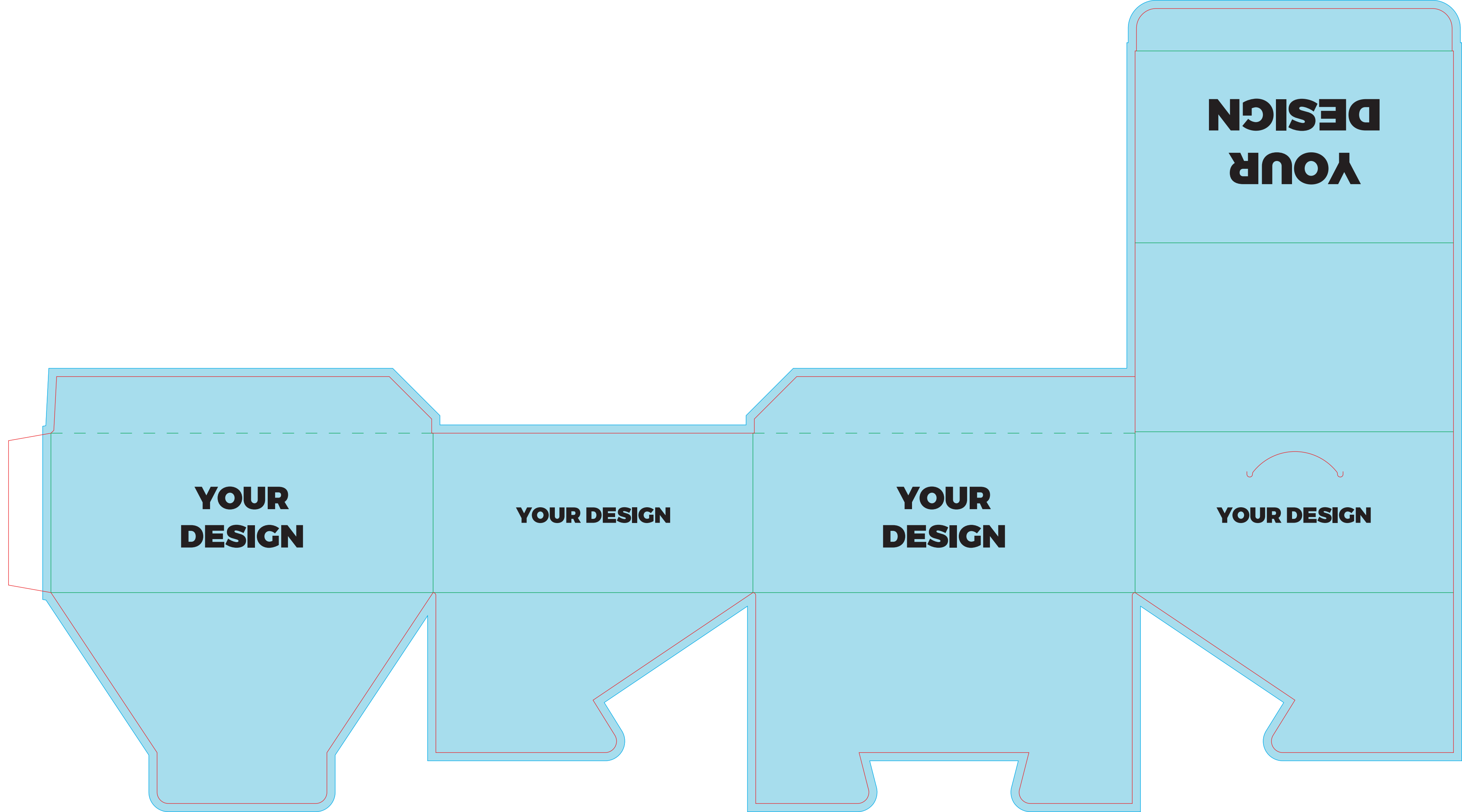




PLASTICA

**YOUR DESIGN**

**YOUR DESIGN**



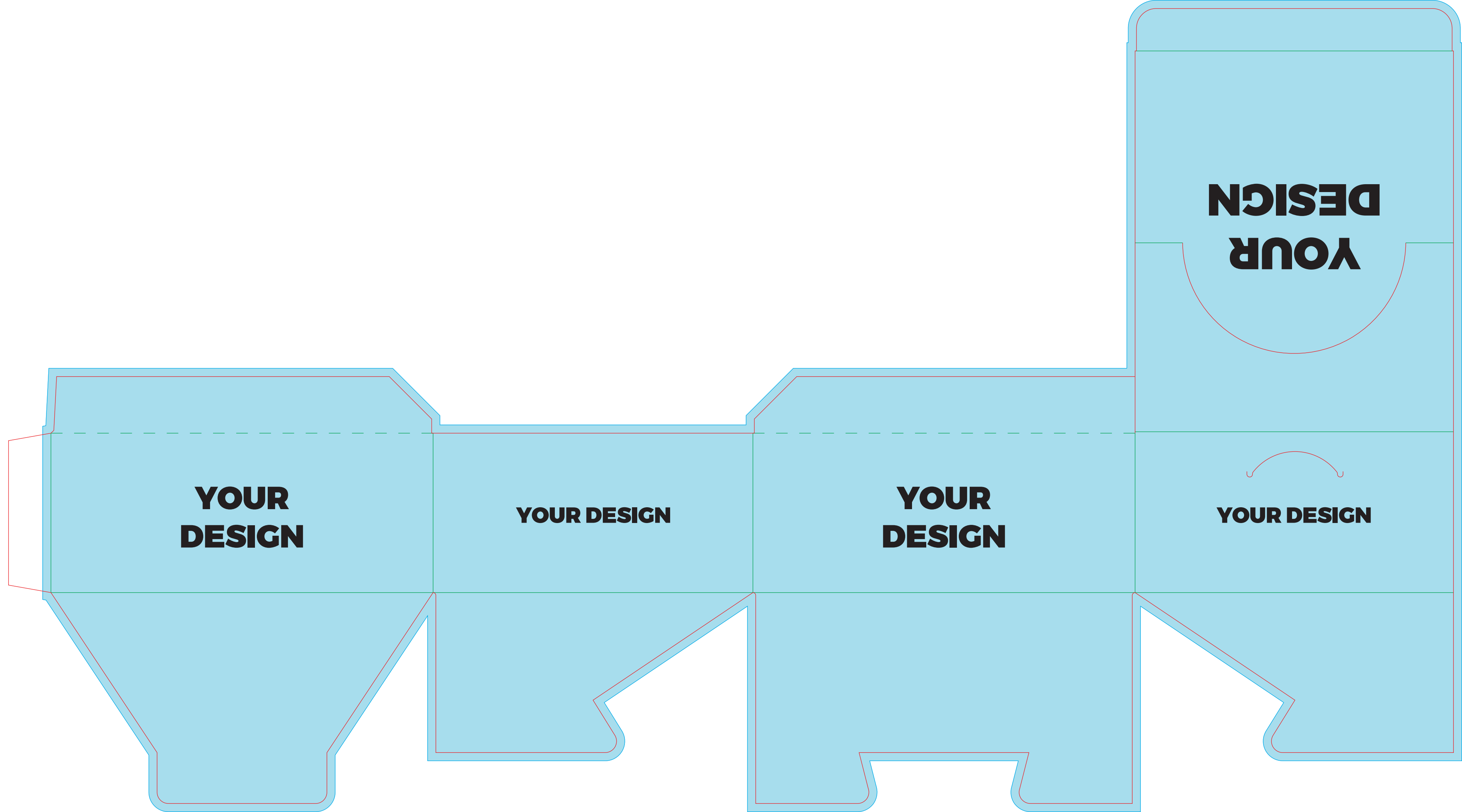
**YOUR  
DESIGN**

**YOUR  
DESIGN**

**YOUR DESIGN**

**YOUR  
DESIGN**

**YOUR DESIGN**



**YOUR  
DESIGN**

**YOUR  
DESIGN**

**YOUR DESIGN**

**YOUR  
DESIGN**

**YOUR DESIGN**